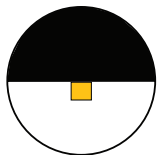
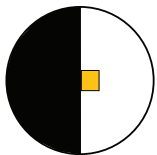


REGULOR

Design Guide



Ceiling

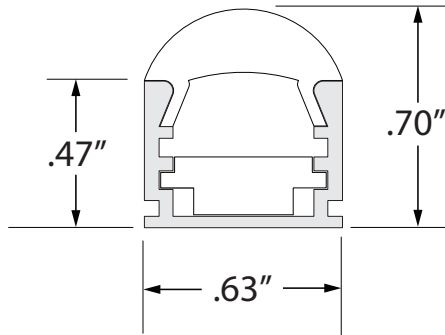


Wall



PROFILE DIMENSIONS

Regular Channel



Regular Channel Insert

Shallow Sided

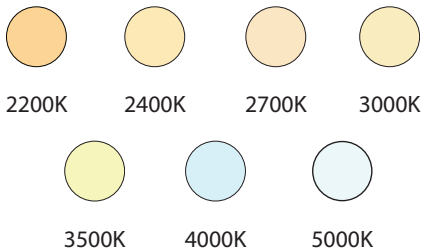


Deep Sided

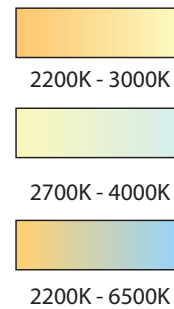
AVAILABLE TIVOTAPE™ OPTIONS

Based on 3000K / Delivered Lumens

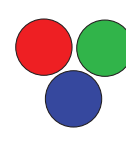
SB 3 W/ft
XS 3.3 W/ft
HO 4.4 W/ft



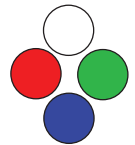
Tunable White 3 W/ft



RGB 4.1 W/ft



RGBW 5.3 W/ft



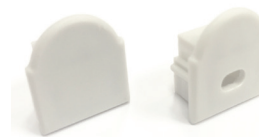
ORDERING INFORMATION



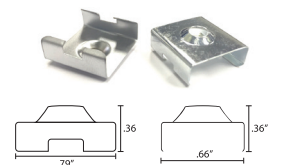
RGLR-CHAN-6.5
Anodized Aluminum channel with adjustable degree insert.



S-LNS-LF-6.5
Light Focusing Lens, Clear, length 6.5'



RGLR-EC-01
End Cap without hole
RGLR-EC-02
End Cap with hole



MTBK-01
Mounting Bracket Zinc
MTBK-02
Mounting Bracket Chrome

Adjustable extrusion with light focusing lens. Adjustable insert allows for TivoTape to emit a 10°, 30°, 60°, 90° beam angle.



Option 1: 10° Beam Angle

This option does not use the included insert.

Step 1: Cut Tivotape™ at recommended cut point, if necessary, to fit channel.

Step 2: Peel off backing tape and apply Tivotape™ directly to the inside surface of Regular Channel.



Option 2: 30° and 60° Beam Angle .

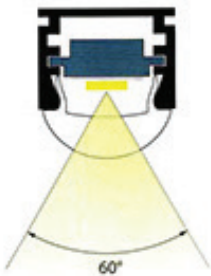
Step 1: Position the Channel Insert with the shallow side up.

Step 2: Make sure insert surface where Tivotape is to be applied is clean, free of all dirt, oil and debris.

Step 3: Peel backing tape from bottom side of Tivotape™ and attach to shallow surface of insert.

Step 4: Slide insert into channel as shown.

Use lower slot in Channel to achieve a 30° beam angle and use the upper slot for a 60° beam angle.



Option 3: 90° Beam Angle.

Step 1: Position the Channel Insert with the deep side up.

Step 2: Make sure surface of insert where Tivotape is to be applied is clean, free of all dirt, oil and debris.

Step 3: Peel backing tape from bottom side of Tivotape™ and attach to deep surface of insert.

Step 4: Slide insert into upper slot of channel as shown.

